

超强硬化王

MEGA HARD 1

Fast Curing
快干!

Excellent Impact Resistance
抗震动!

地面的缝隙处
To fill the joints of the floors.

工厂，仓库等混凝土地板的裂缝补修。
To repair the cracks on the concrete or mortar floors of factories and warehouses.

高硬度，防止撞击。
To prevent the joints material to be digged.

防止高跟鞋踩空。
To prevent the damage from high heels.

修补及巩固混凝土裂缝。
To reinforce the cracks on the brittle mortar and concrete.



MEGA HARD 1

One-Part Special Elastic Adhesives
单组分特殊MS补修胶

F☆☆☆☆

超强硬化王

●抗震动!

利用特殊技术配方,使胶不仅拥有高强度,高硬度,还保有弹性。用于地面缝隙处,防止高跟鞋跟陷入,防止踩空。

●快干!

表干时间约20分钟(23℃)。

●耐候性佳

●环保!

不含甲醛,安全安心。

用途

- 地面的缝隙处,防止高跟鞋踩空。
- 工厂,仓库等混凝土地板的裂缝修补。
- 修补及巩固混凝土裂缝。
- 高硬度,防止撞击。

●Excellent Impact Resistance

Elastic adhesives with high intensity and high hardness, also successfully has appropriate elasticity.

●Fast Curing Type

Since the tack free time is about 20 minutes (23℃).

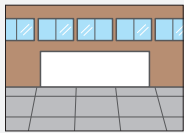
●Excellent Weather Resistance

●Safe and Secure F☆☆☆☆

Non-Formaldehyde

Usage

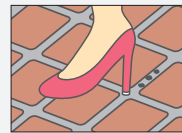
- To fill the joints of the floors and
- To repair the cracks on the concrete or mortal floors of factories and warehouses.
- To reinforce the cracks on the brittle mortar and concrete.
- To prevent the joints material to be digged.



土间缝隙处
joints of the floors



水泥混凝土地面的裂缝修补
repair the cracks on the concrete or mortal



防止高跟鞋踩空
prevent the damage from high heels

性能数据 The Parameters of Mega Hard 1

外观 Appearance	膏状 Paste	
密度 Density	1.40	
粘度 (Pa·s) Adhesion (Pa·s)	BS型旋转粘度计/10rpm BS Type Rotational Viscometer Rotor/10rpm	400
不挥发成分 (%) Non-Volatile Proportion (%)	110°C 3小时 110°C 3Hours	95
表干时间 (分钟) Tack Free Time (Minute)	23°C	20
哑铃状物理性质 Dumbbell Parameters	50%拉伸力 (N/mm ²) 50%Tensile Strength (N/mm ²)	1.00
	最大拉伸力 (N/mm ²) Maximum Tensile Strength (N/mm ²)	2.50
	破断时伸长率 Elongation At Break (%)	350
	邵氏硬度A Shore A Hardness	55

使用方法

- 1、清扫并去除施工部的油、水分、尘埃等,保持干燥。
- 2、为了防止密封胶溢出到施工部外,请使用美纹纸胶带。
- 3、请均匀涂上底涂,并保持干燥。
- 4、取下管嘴,戳破内部的防湿膜之后再装上管嘴。
- 5、以所需密封处大小,适当切下管嘴,再装上专用枪。
- 6、最后的表面处理请尽快进行。

注意事项

- 本产品为工业用产品。请不要在密封胶以外的用途中使用。
- 请在施工前确认好密封胶的粘接性和上涂料性。
- 请不要使用油性系、醇酸系、邻苯二甲酸系等涂料。
- 其他详细的请参考MSDS(制品安全数据表)

☆此目录所记载的情况和数据是弊公司实验所得结果。使用前,请务必确认。此资料记载的事项如有变更,不会告知,请谅解。

拉伸粘结性 The Extensive Adhesion of Mega Hard 1

拉伸粘结性强度 Adhesion Tension	养生后 After Curing	50%拉伸力 (N/mm ²) 50%Extension (N/mm ²)	1.00
		最大拉伸力 (N/mm ²) Max Extension (N/mm ²)	1.80
		破断时伸长率 Elongation At Break (%)	170
	加热 After Heating	50%拉伸力 (N/mm ²) 50%Extension (N/mm ²)	1.20
		最大拉伸力 (N/mm ²) Max Extension (N/mm ²)	2.40
		破断时伸长率 Elongation At Break (%)	100
浸水后 After Soaking	50%拉伸力 (N/mm ²) 50%Extension (N/mm ²)	0.70	
	最大拉伸力 (N/mm ²) Max Extension (N/mm ²)	1.20	
	破断时伸长率 Elongation At Break (%)	290	

根据JISA1439标准
基材: 铝
JIS A 1439 Standard
Applied Material: Aluminum

Directions

1. Please wipe off oil, water and dirt from the operational area, and let it dry.
2. In order to keep sealants from the surrounding areas, please use masking tapes.
3. Please apply specified primers evenly and then let it dry.
4. Please remove the nozzle, puncture the inside film with nozzle tip or screwdriver, then reinstall the nozzle.
5. Cut the nozzle tip according to the size, then please load it into the Cartridge Gun.
6. Please paint on the surface as soon as possible.

Attentions

This product is used for regular industrial purposes. Please do not use it for anything other than sealing. Please determine the adhesion and paintability before construction. Please do not use oil based, alkyd and phthalate coatings. Please check the MSDS for more information.

Dear Customer

This catalog records the information and data from our own experiments. Please determine the specific situations before construction. Also, when the information changes, please excuse us for not informing you of the changes.

●如需订购,咨询,请联系.....

■总公司

〒592-8352 大阪府堺市西区築港浜寺西町13-12
TEL: 072-268-0322 FAX: 072-268-3119
http://www.sharpchem.co.jp/chinese/
info@sharpchem.co.jp

■高砂事务所

TEL: +81-72-268-0321 FAX: +81-72-268-0326

■东京营业所

TEL: +81-3-3649-8103 FAX: +81-3-3646-6011

□札幌出張所

TEL: +81-11-883-2489 FAX: +81-11-883-2145

シャープ化学工業株式会社
SHARP CHEMICAL IND. CO., LTD.



●For ordering and more information of Mega Hard 1, please contact.....

■ HEAD OFFICE

13-12 Chikkohamaderanishi-machi Nishi-ku Sakai OSAKA 592-8352 JAPAN
TEL: 072-268-0322 FAX: 072-268-3119
http://www.sharpchem.co.jp/english/
info@sharpchem.co.jp

■ TAKASAGO SALES OFFICE:

TEL: +81-72-268-0321 FAX: +81-72-268-0326

■ TOKYO SALES OFFICE:

TEL: +81-3-3649-8103 FAX: +81-03-3646-6011

□ SAPPORO SALES BRANCH

TEL: +81-11-883-2489 FAX: +81-11-883-2145